

Rig Move Hazards

by

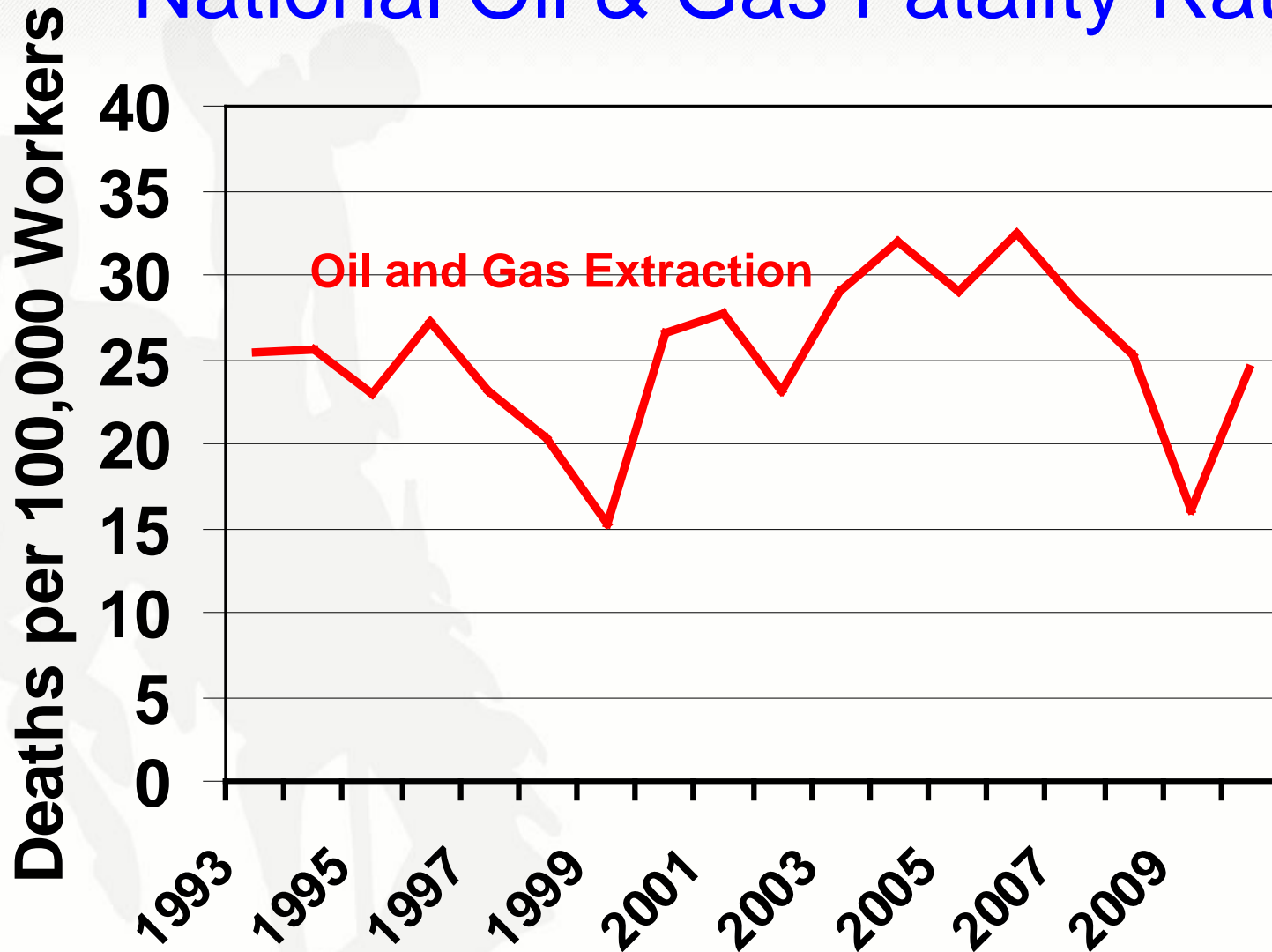
J.D. Danni

IADC Rig Moving Committee Meeting

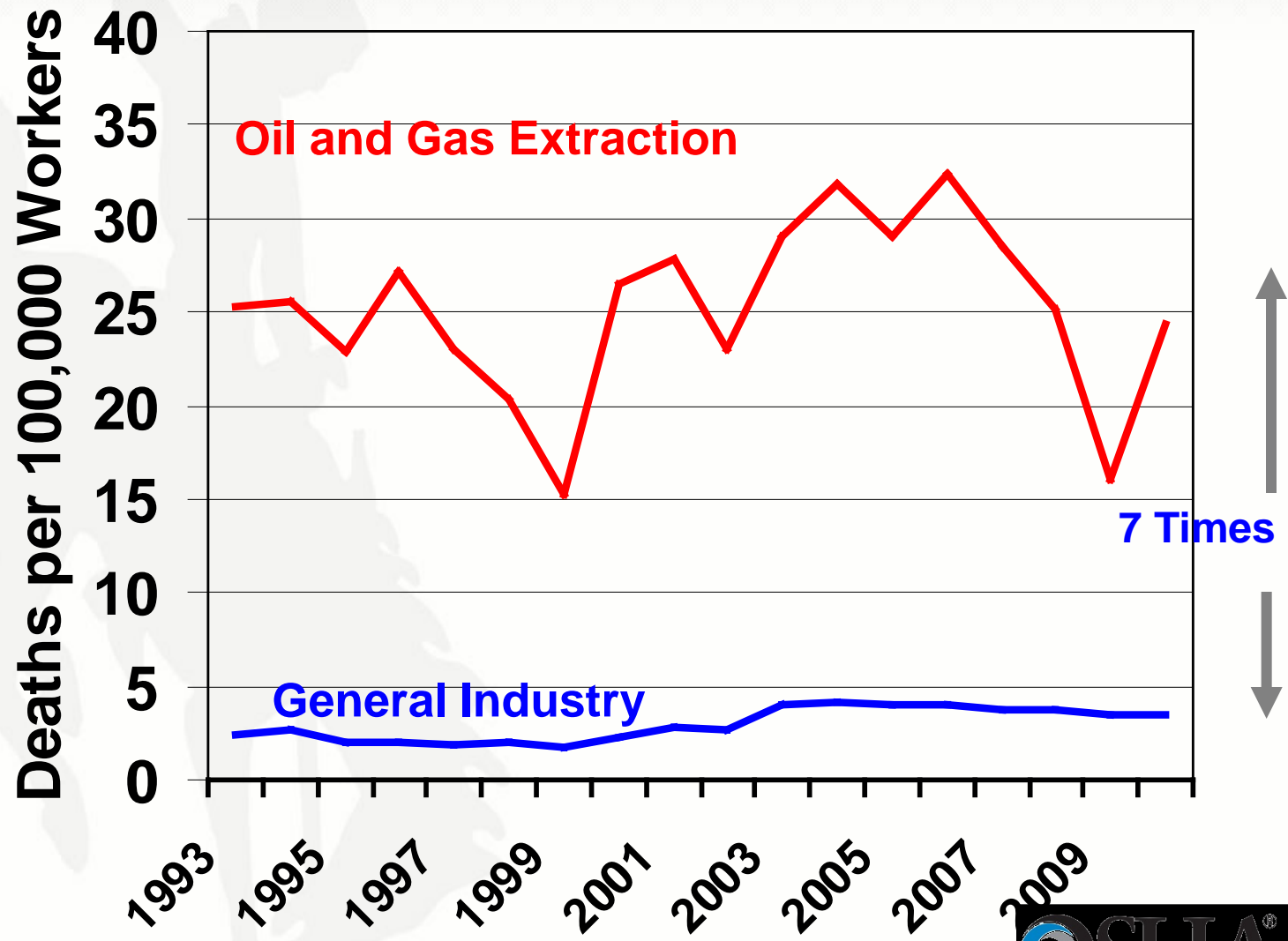
July 18, 2013



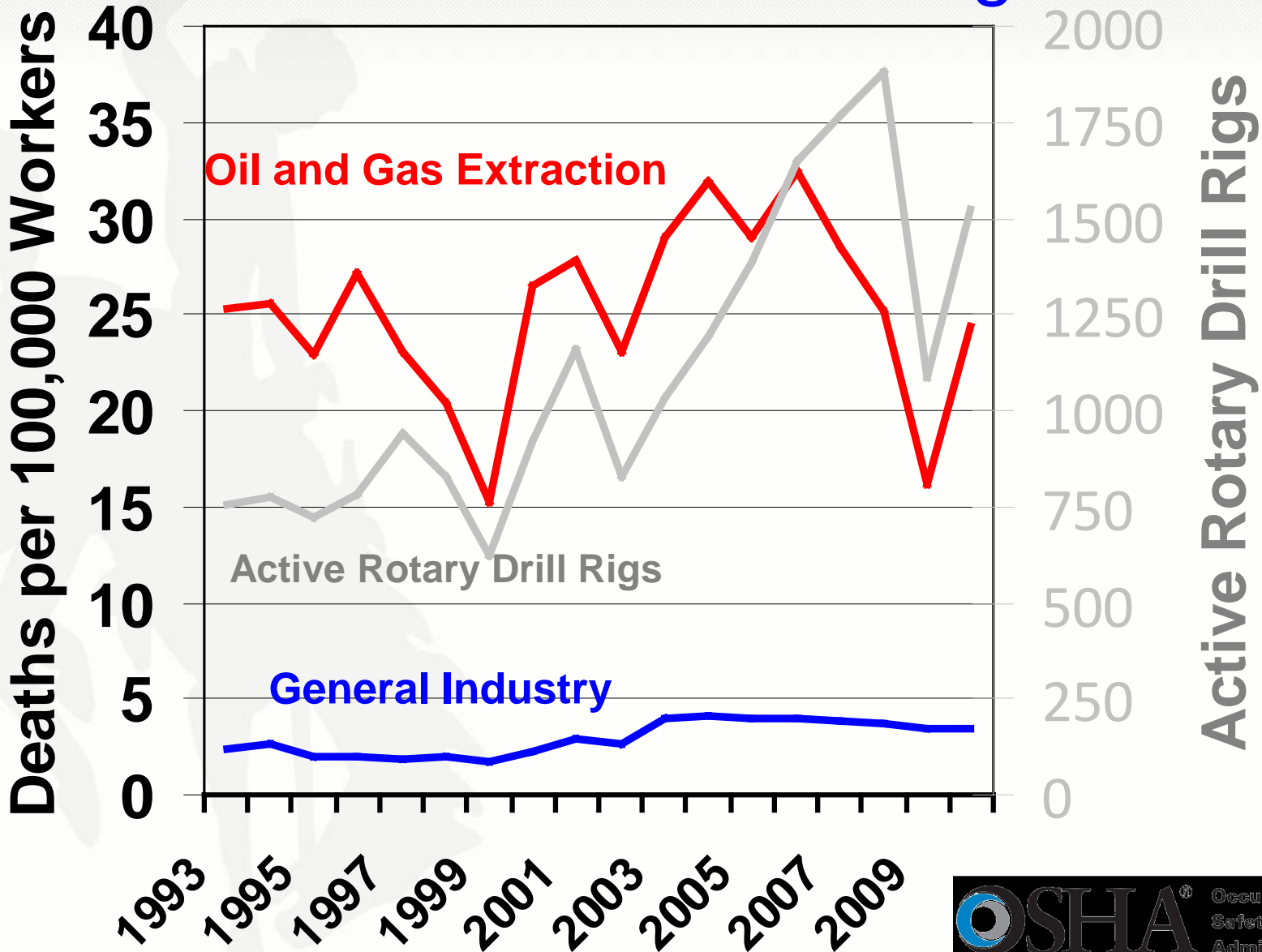
National Oil & Gas Fatality Rate



National Oil & Gas Fatality Rate 7 Times National Average



National Oil & Gas Fatality Rate 7 Times National Average



**FIGURE 1 — Leading Causes of Fatality by Company
U.S. Oil and Gas Extraction Workers 2003-2009**

| Rank | Operator 121 (18%) | Drilling Contractor 198 (31%) | Well Servicing Company 329 (51%) | All Company Types 648 |
|-------|------------------------------|-------------------------------------|--|-------------------------------|
| 1 | Highway Crash 29 (24%) | Struck by Object 52 (26%) | Highway Crash 120 (36%) | Highway Crash 190 (29%) |
| 2 | Struck by Object 19 (16%) | Highway Crash 41 (21%) | Struck by Object 60 (18%) | Struck by Object 131 (20%) |
| 3 | Aircraft 14 (12%) | Falls 28 (14%) | Explosion 34 (10%) | Explosion 53 (8%) |
| 4 | Fire 14 (12%) | Caught/compressed 17 (9%) | Caught/compressed 20 (6%) | Caught/Compressed 46 (7%) |
| 5 | Explosion 10 (8%) | Electrocution 13 (7%) | Fire 15 (5%) | Falls 45 (7%) |
| Other | 35 (28%) | 47 (23%) | 80 (25%) | 183 (29%) |

*Fatal Injuries; Kyla Retzer & Ryan Hill; CDC NIOSH, Oil and Gas Extraction Safety and Health Program

Wyoming Oil & Gas Fatalities by Event

(2003 to 2012)

- Contact with Object & Equipment (struck, caught-in, pinned) – 50%
- Fall – 19%
- Fire or Explosion – 16%

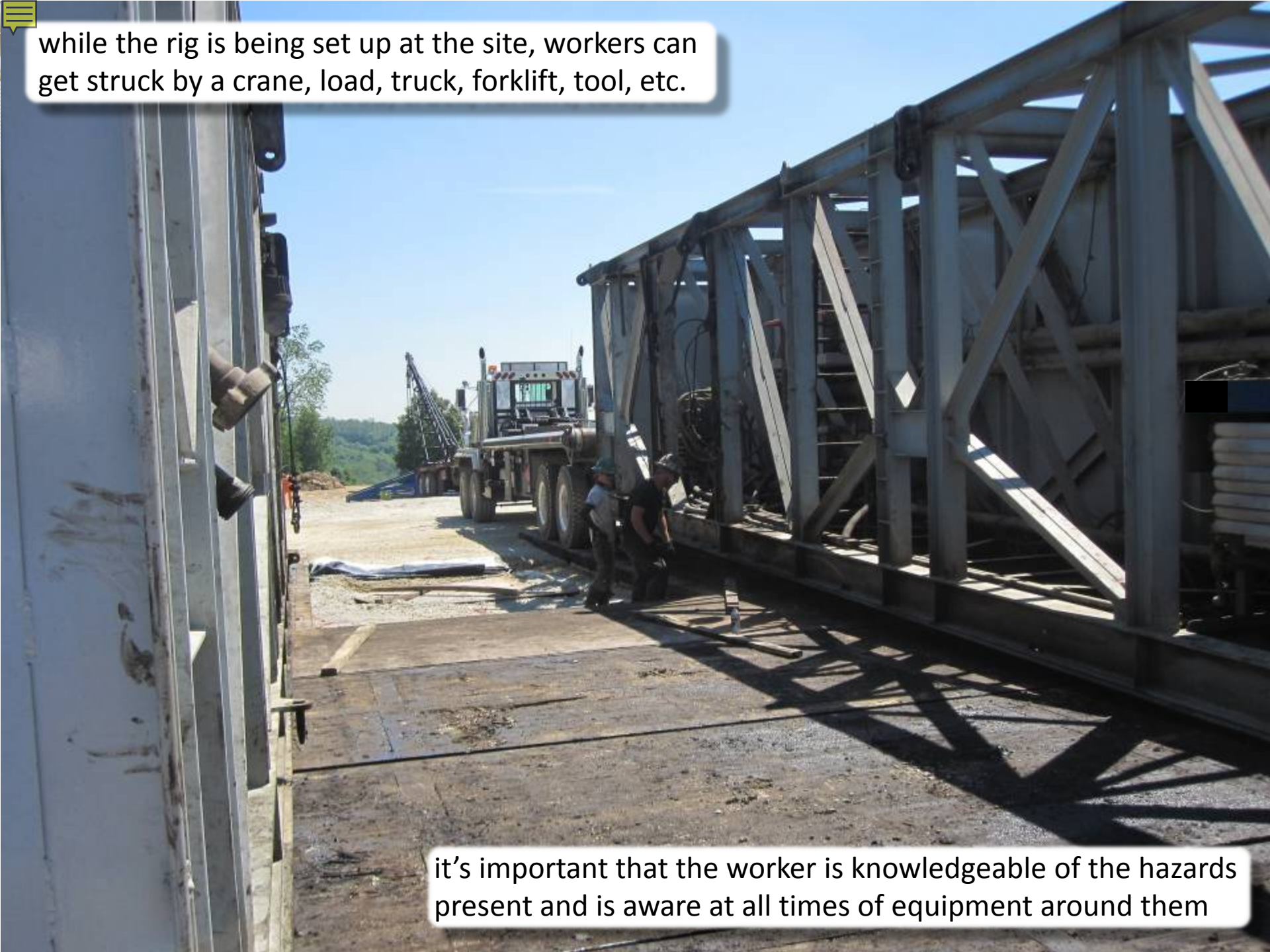
Hazards Associated with Rig Moving

- Moving Vehicles
- Blind Spots
- Pinch points
- Weather
- Slips, Trips, & Falls
- Falls
- Lifting
- Forklifts

Hazards Associated with Rig Moving (cont')

- Hand Tools
- Wire Ropes and Chains
- Over-Head Loads
- Over-Head Power Lines
- Truck Traffic

while the rig is being set up at the site, workers can get struck by a crane, load, truck, forklift, tool, etc.



it's important that the worker is knowledgeable of the hazards present and is aware at all times of equipment around them



this worker is cutting through a bad spot while the truck is moving



Corrective Actions: never take chances like this when the space is this limited; wait until the truck parks



001223



this opening can sneak up on a worker when walking backwards directing a load into position

Corrective Actions: place a cover over this opening



this is another example of a fall hazard

Corrective Action: cover the rest of the hole
or cover entire hole with a larger grate

Special Servicing Fatality

The sand was going to be transferred from truck to a portable holding tank called a “Sand King”



Well Servicing Fatality

(Employee was Electrocuted from Overhead Power Line)



Wyoming



Thank You

Any Questions?

?????????